

Beamex DMT Dirt Trap

beamex
WORLD-CLASS CALIBRATION SOLUTIONS®

General

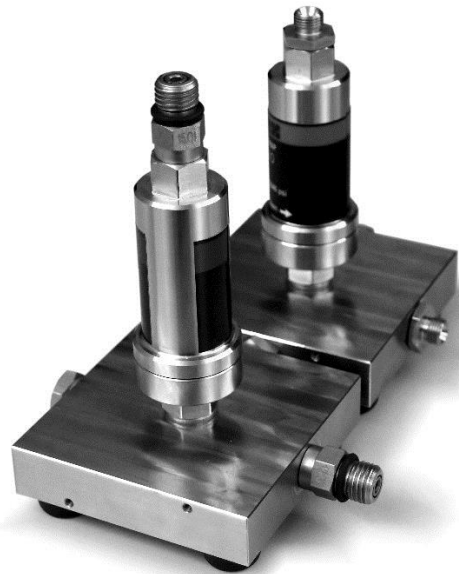
DMT is a tool for prohibiting dirt and moisture entering pressure source and calibrator. The impurities in Device Under Test are trapped into DMT.

DMT is available for two pressure ranges:

- **DMT210:** Max. pressure: 210 bar (3045 psi), including Hydrotechnics 1215 male connectors and
- **DMT40:** Max. pressure: 40 bar (580 psi), including G 1/8" male with 60° internal cone connectors.

Standard delivery contains:

- DMT Dirt Trap and its stand.
- A hose for connecting DMT to the Pressure Source. Type of hose depends on DMT version.
- A set of seals and gaskets.
- A support for installing DMT into the back of a MCS200 Bench system.
- In DMT40: An adapter for the bottom of the Dirt Trap. To be used if you remove the stand and fix DMT40, e.g. to a wall.



Pressure Media: Pressurized air. Liquids are not supported.

Using DMT

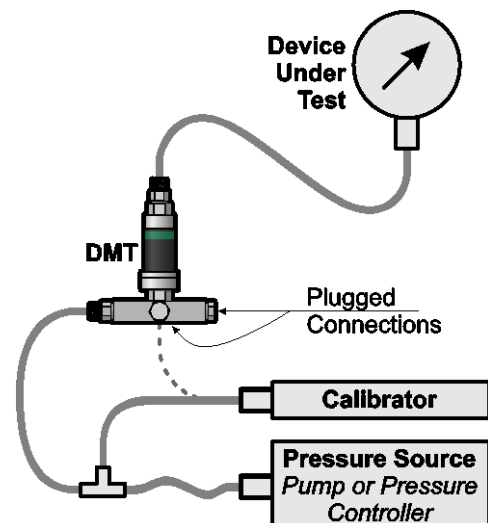
Connect the pressure source to DMT's stand and the instrument (Device Under Test) to the top of DMT. If you have a T-hose between DMT and the pressure source, connect the calibrator to the T-hose. If no T-hose is available, connect the calibrator to one of DMT's plugged connections (dotted line in the adjacent picture).

Important!

Always use DMT in a vertical position. DMT may not work if it is tilted.

Warning!

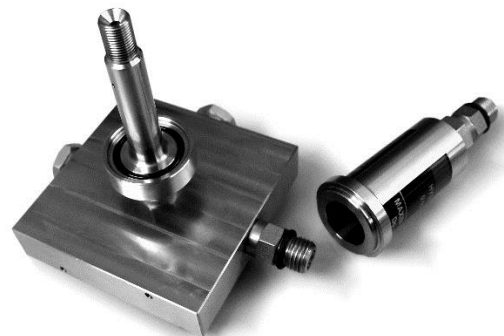
Never exceed the maximum pressure. High pressure may result in serious damages to the measurement system and technicians working with the system.



Service

Periodically open DMT and remove the moisture and dirt trapped inside DMT. The period to clean DMT depends on the amount of impurities in the pressure media.

The seals in DMT may need replacement because of wear and tear. Contact Beamex for replacement parts.



BEAMEX OY AB

Ristisuonraitti 10
FIN-68600 Pietarsaari
FINLAND

Tel +358 - 10 - 5505000
Fax +358 - 10 - 5505404
E-mail: sales@beamex.com
service@beamex.com
Internet: <http://www.beamex.com>